

Form **990**

### Return of Organization Exempt From Income Tax

Under section 501(c), 527, or 4947(a)(1) of the Internal Revenue Code (except black lung benefit trust or private foundation)

The organization may have to use a copy of this return to satisfy state reporting requirements

OMB No 1545-0047

**2009**

Open to Public Inspection

**A** For the 2009 calendar year, or tax year beginning **07/01/09**, and ending **06/30/10**

- Address change
- Name change
- Initial return
- Termination
- Amended return
- Application pending

**B** Please use IRS label or print or type. See Specific Instructions.

**C** Name of organization  
**CITY ON A HILL MINISTRIES**

Doing Business As

Number and street (or P O box if mail is not delivered to street address) Room/suite  
**100 SOUTH PINE STREET**

City or town, state or country, and ZIP + 4  
**ZEELAND MI 49464**

**D** Employer identification number  
**20-3901260**

**E** Telephone number  
**616-748-6061**

**G** Gross receipts \$ **770,769**

**F** Name and address of principal officer  
**SAME AS "C" ABOVE**

**H(a)** Is this a group return for affiliates?  Yes  No

**H(b)** Are all affiliates included?  Yes  No

If "No," attach a list (see instructions)

**I** Tax-exempt status  501(c) (**3**) (insert no)  4947(a)(1) or  527

**J** Website **www.coahm.org**

**H(c)** Group exemption number

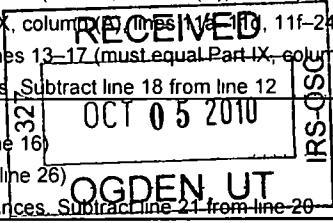
**K** Type of organization  Corporation  Trust  Association  Other

**L** Year of formation **2005** **M** State of legal domicile **MI**

#### Part I Summary

Activities & Governance	<b>1</b> Briefly describe the organization's mission or most significant activities <b>See Schedule O</b>		
	<b>2</b> Check this box <input type="checkbox"/> if the organization discontinued its operations or disposed of more than 25% of its net assets		
	<b>3</b> Number of voting members of the governing body (Part VI, line 1a)	<b>3</b>	<b>9</b>
	<b>4</b> Number of independent voting members of the governing body (Part VI, line 1b)	<b>4</b>	<b>9</b>
	<b>5</b> Total number of employees (Part V, line 2a)	<b>5</b>	<b>16</b>
	<b>6</b> Total number of volunteers (estimate if necessary)	<b>6</b>	<b>200</b>
	<b>7a</b> Total gross unrelated business revenue from Part VIII, column (C), line 12	<b>7a</b>	
<b>b</b> Net unrelated business taxable income from Form 990-T, line 34	<b>7b</b>	<b>0</b>	
Revenue	<b>8</b> Contributions and grants (Part VIII, line 1h)	Prior Year <b>348,324</b>	Current Year <b>329,445</b>
	<b>9</b> Program service revenue (Part VIII, line 2g)	<b>388,459</b>	<b>439,477</b>
	<b>10</b> Investment income (Part VIII, column (A), lines 3, 4, and 7d)	<b>161</b>	<b>134</b>
	<b>11</b> Other revenue (Part VIII, column (A), lines 5, 6d, 8c, 9c, 10c, and 11e)	<b>821</b>	<b>1,713</b>
	<b>12</b> Total revenue - add lines 8 through 11 (must equal Part VIII, column (A), line 12)	<b>737,765</b>	<b>770,769</b>
Expenses	<b>13</b> Grants and similar amounts paid (Part IX, column (A), lines 1-3)		
	<b>14</b> Benefits paid to or for members (Part IX, column (A), line 4)		
	<b>15</b> Salaries, other compensation, employee benefits (Part IX, column (A), lines 5-10)	<b>220,859</b>	<b>242,005</b>
	<b>16a</b> Professional fundraising fees (Part IX, column (A), line 11e)		
	<b>b</b> Total fundraising expenses (Part IX, column (D), line 25)		
<b>17</b> Other expenses (Part IX, column (B), lines 11f-14f, 11f-24f)	<b>500,861</b>	<b>503,211</b>	
<b>18</b> Total expenses Add lines 13-17 (must equal Part IX, column (A), line 25)	<b>721,720</b>	<b>745,216</b>	
<b>19</b> Revenue less expenses Subtract line 18 from line 12	<b>16,045</b>	<b>25,553</b>	
Net Assets or Fund Balances	<b>20</b> Total assets (Part X, line 16)	Beginning of Current Year <b>1,140,822</b>	End of Year <b>1,136,961</b>
	<b>21</b> Total liabilities (Part X, line 26)	<b>681,398</b>	<b>651,984</b>
	<b>22</b> Net assets or fund balances Subtract line 21 from line 20	<b>459,424</b>	<b>484,977</b>

SCANNED OCT 21 2010



#### Part II Signature Block

Under penalties of perjury, I declare that I have examined this return, including accompanying schedules and statements, and to the best of my knowledge and belief, it is true, correct, and complete. Declaration of preparer (other than officer) is based on all information of which preparer has any knowledge.

Signature of officer: **STEVE DYKSTRA** Date: \_\_\_\_\_  
Type or print name and title: **PRESIDENT**

**Paid Preparer's Use Only**

Preparer's signature: **Timothy Hill** Date: **09/22/10** Check if self-employed  Preparer's identifying number (see instructions): **P00795656**

Firm's name (or yours if self-employed), address, and ZIP + 4: **Kickover, Scholma & Shumaker, P.C. P.O. Box 280 Zeeland, MI 49464-0280**

EIN: **38-2157876** Phone no: **616-772-4615**

May the IRS discuss this return with the preparer shown above? (see instructions)  Yes  No

FOR Privacy Act and Paperwork Reduction Act Notice, see the separate instructions.

614 3

**Part III Statement of Program Service Accomplishments**

1 Briefly describe the organization's mission

**See Schedule O**

2 Did the organization undertake any significant program services during the year which were not listed on the prior Form 990 or 990-EZ?

Yes  No

If "Yes," describe these new services on Schedule O

3 Did the organization cease conducting, or make significant changes in how it conducts, any program services?

Yes  No

If "Yes," describe these changes on Schedule O

4 Describe the exempt purpose achievements for each of the organization's three largest program services by expenses. Section 501(c)(3) and 501(c)(4) organizations and section 4947(a)(1) trusts are required to report the amount of grants and allocations to others, the total expenses, and revenue, if any, for each program service reported

4a (Code ) (Expenses \$ **540,431** including grants of \$ ) (Revenue \$ )

**CITY ON A HILL IS AN EXPANDING COMMUNITY OF COMPASSIONATE PEOPLE WHO DESIRE TO REFLECT CHRIST THROUGH SERVING INDEPENDENT NON-PROFIT MINISTRIES, ENHANCING THEIR ABILITY TO BRING HOPE, HELP, AND HEALING LOCALLY AND AROUND THE WORLD.**

4b (Code ) (Expenses \$ including grants of \$ ) (Revenue \$ )

4c (Code ) (Expenses \$ including grants of \$ ) (Revenue \$ )

4d Other program services (Describe in Schedule O )

(Expenses \$ **204,785** including grants of \$ ) (Revenue \$ )

4e Total program service expenses **745,216**

**Part IV Checklist of Required Schedules**

		Yes	No
1	Is the organization described in section 501(c)(3) or 4947(a)(1) (other than a private foundation)? If "Yes," complete Schedule A	X	
2	Is the organization required to complete Schedule B, Schedule of Contributors?	X	
3	Did the organization engage in direct or indirect political campaign activities on behalf of or in opposition to candidates for public office? If "Yes," complete Schedule C, Part I		X
4	<b>Section 501(c)(3) organizations.</b> Did the organization engage in lobbying activities? If "Yes," complete Schedule C, Part II		X
5	<b>Section 501(c)(4), 501(c)(5), and 501(c)(6) organizations.</b> Is the organization subject to the section 6033(e) notice and reporting requirement and proxy tax? If "Yes," complete Schedule C, Part III		
6	Did the organization maintain any donor advised funds or any similar funds or accounts where donors have the right to provide advice on the distribution or investment of amounts in such funds or accounts? If "Yes," complete Schedule D, Part I		X
7	Did the organization receive or hold a conservation easement, including easements to preserve open space, the environment, historic land areas, or historic structures? If "Yes," complete Schedule D, Part II		X
8	Did the organization maintain collections of works of art, historical treasures, or other similar assets? If "Yes," complete Schedule D, Part III		X
9	Did the organization report an amount in Part X, line 21, serve as a custodian for amounts not listed in Part X, or provide credit counseling, debt management, credit repair, or debt negotiation services? If "Yes," complete Schedule D, Part IV		X
10	Did the organization, directly or through a related organization, hold assets in term, permanent, or quasi-endowments? If "Yes," complete Schedule D, Part V		X
11	Is the organization's answer to any of the following questions "Yes"? If so, complete Schedule D, Parts VI, VII, VIII, IX, or X as applicable	X	
	<ul style="list-style-type: none"> <li>• Did the organization report an amount for land, buildings, and equipment in Part X, line 10? If "Yes," complete Schedule D, Part VI</li> <li>• Did the organization report an amount for investments—other securities in Part X, line 12 that is 5% or more of its total assets reported in Part X, line 16? If "Yes," complete Schedule D, Part VII</li> <li>• Did the organization report an amount for investments—program related in Part X, line 13 that is 5% or more of its total assets reported in Part X, line 16? If "Yes," complete Schedule D, Part VIII</li> <li>• Did the organization report an amount for other assets related in Part X, line 15 that is 5% or more of its total assets reported in Part X, line 16? If "Yes," complete Schedule D, Part IX</li> <li>• Did the organization report an amount for other liabilities in Part X, line 25? If "Yes," complete Schedule D, Part X</li> <li>• Did the organization's separate or consolidated financial statements for the tax year include a footnote that addresses the organization's liability for uncertain tax positions under FIN 48? If "Yes," complete Schedule D, Part X</li> </ul>		
12	Did the organization obtain separate, independent audited financial statements for the tax year? If "Yes," complete Schedule D, Parts XI, XII, and XIII	X	
12A	Was the organization included in consolidated, independent audited financial statements for the tax year? If "Yes," completing Schedule D, Parts XI, XII, and XIII is optional		
		Yes	No
			X
13	Is the organization a school described in section 170(b)(1)(A)(ii)? If "Yes," complete Schedule E		X
14a	Did the organization maintain an office, employees, or agents outside of the United States?		X
14b	Did the organization have aggregate revenues or expenses of more than \$10,000 from grantmaking, fundraising, business, and program service activities outside the United States? If "Yes," complete Schedule F, Part I		X
15	Did the organization report on Part IX, column (A), line 3, more than \$5,000 of grants or assistance to any organization or entity located outside the United States? If "Yes," complete Schedule F, Part II		X
16	Did the organization report on Part IX, column (A), line 3, more than \$5,000 of aggregate grants or assistance to individuals located outside the United States? If "Yes," complete Schedule F, Part III		X
17	Did the organization report a total of more than \$15,000 of expenses for professional fundraising services on Part IX, column (A), lines 6 and 11e? If "Yes," complete Schedule G, Part I		X
18	Did the organization report more than \$15,000 total of fundraising event gross income and contributions on Part VIII, lines 1c and 8a? If "Yes," complete Schedule G, Part II		X
19	Did the organization report more than \$15,000 of gross income from gaming activities on Part VIII, line 9a? If "Yes," complete Schedule G, Part III		X
20	Did the organization operate one or more hospitals? If "Yes," complete Schedule H		X

**Part IV Checklist of Required Schedules (continued)**

	Yes	No
<b>21</b> Did the organization report more than \$5,000 of grants and other assistance to governments and organizations in the United States on Part IX, column (A), line 1? If "Yes," complete Schedule I, Parts I and II		<b>X</b>
<b>22</b> Did the organization report more than \$5,000 of grants and other assistance to individuals in the United States on Part IX, column (A), line 2? If "Yes," complete Schedule I, Parts I and III		<b>X</b>
<b>23</b> Did the organization answer "Yes" to Part VII, Section A, line 3, 4, or 5 about compensation of the organization's current and former officers, directors, trustees, key employees, and highest compensated employees? If "Yes," complete Schedule J		<b>X</b>
<b>24a</b> Did the organization have a tax-exempt bond issue with an outstanding principal amount of more than \$100,000 as of the last day of the year, that was issued after December 31, 2002? If "Yes," answer lines 24b through 24d and complete Schedule K. If "No," go to line 25		<b>X</b>
<b>b</b> Did the organization invest any proceeds of tax-exempt bonds beyond a temporary period exception?		
<b>c</b> Did the organization maintain an escrow account other than a refunding escrow at any time during the year to defease any tax-exempt bonds?		
<b>d</b> Did the organization act as an "on behalf of" issuer for bonds outstanding at any time during the year?		
<b>25a Section 501(c)(3) and 501(c)(4) organizations.</b> Did the organization engage in an excess benefit transaction with a disqualified person during the year? If "Yes," complete Schedule L, Part I		<b>X</b>
<b>b</b> Is the organization aware that it engaged in an excess benefit transaction with a disqualified person in a prior year, and that the transaction has not been reported on any of the organization's prior Forms 990 or 990-EZ? If "Yes," complete Schedule L, Part I		<b>X</b>
<b>26</b> Was a loan to or by a current or former officer, director, trustee, key employee, highly compensated employee, or disqualified person outstanding as of the end of the organization's tax year? If "Yes," complete Schedule L, Part II		<b>X</b>
<b>27</b> Did the organization provide a grant or other assistance to an officer, director, trustee, key employee, substantial contributor, or a grant selection committee member, or to a person related to such an individual? If "Yes," complete Schedule L, Part III		<b>X</b>
<b>28</b> Was the organization a party to a business transaction with one of the following parties (see Schedule L, Part IV instructions for applicable filing thresholds, conditions, and exceptions)		
<b>a</b> A current or former officer, director, trustee, or key employee? If "Yes," complete Schedule L, Part IV		<b>X</b>
<b>b</b> A family member of a current or former officer, director, trustee, or key employee? If "Yes," complete Schedule L, Part IV		<b>X</b>
<b>c</b> An entity of which a current or former officer, director, trustee, or key employee of the organization (or a family member) was an officer, director, trustee, or direct or indirect owner? If "Yes," complete Schedule L, Part IV		<b>X</b>
<b>29</b> Did the organization receive more than \$25,000 in non-cash contributions? If "Yes," complete Schedule M		<b>X</b>
<b>30</b> Did the organization receive contributions of art, historical treasures, or other similar assets, or qualified conservation contributions? If "Yes," complete Schedule M		<b>X</b>
<b>31</b> Did the organization liquidate, terminate, or dissolve and cease operations? If "Yes," complete Schedule N, Part I		<b>X</b>
<b>32</b> Did the organization sell, exchange, dispose of, or transfer more than 25% of its net assets? If "Yes," complete Schedule N, Part II		<b>X</b>
<b>33</b> Did the organization own 100% of an entity disregarded as separate from the organization under Regulations sections 301.7701-2 and 301.7701-3? If "Yes," complete Schedule R, Part I		<b>X</b>
<b>34</b> Was the organization related to any tax-exempt or taxable entity? If "Yes," complete Schedule R, Parts II, III, IV, and V, line 1		<b>X</b>
<b>35</b> Is any related organization a controlled entity within the meaning of section 512(b)(13)? If "Yes," complete Schedule R, Part V, line 2		<b>X</b>
<b>36 Section 501(c)(3) organizations.</b> Did the organization make any transfers to an exempt non-charitable related organization? If "Yes," complete Schedule R, Part V, line 2		<b>X</b>
<b>37</b> Did the organization conduct more than 5% of its activities through an entity that is not a related organization and that is treated as a partnership for federal income tax purposes? If "Yes," complete Schedule R, Part VI		<b>X</b>
<b>38</b> Did the organization complete Schedule O and provide explanations in Schedule O for Part VI, lines 11 and 19? <b>Note.</b> All Form 990 filers are required to complete Schedule O	<b>X</b>	

**Part V Statements Regarding Other IRS Filings and Tax Compliance**

		Yes	No
<b>1a</b>	Enter the number reported in Box 3 of Form 1096, Annual Summary and Transmittal of U S Information Returns Enter -0- if not applicable		
<b>1a</b>	<b>0</b>		
<b>1b</b>	Enter the number of Forms W-2G included in line 1a Enter -0- if not applicable		
<b>1b</b>	<b>0</b>		
<b>1c</b>	Did the organization comply with backup withholding rules for reportable payments to vendors and reportable gaming (gambling) winnings to prize winners?		<b>X</b>
<b>2a</b>	Enter the number of employees reported on Form W-3, Transmittal of Wage and Tax Statements, filed for the calendar year ending with or within the year covered by this return		
<b>2a</b>	<b>16</b>		
<b>2b</b>	If at least one is reported on line 2a, did the organization file all required federal employment tax returns? <b>Note.</b> If the sum of lines 1a and 2a is greater than 250, you may be required to e-file this return (see instructions)	<b>X</b>	
<b>3a</b>	Did the organization have unrelated business gross income of \$1,000 or more during the year covered by this return?		<b>X</b>
<b>3b</b>	If "Yes," has it filed a Form 990-T for this year? If "No," provide an explanation in Schedule O		
<b>4a</b>	At any time during the calendar year, did the organization have an interest in, or a signature or other authority over, a financial account in a foreign country (such as a bank account, securities account, or other financial account)?		<b>X</b>
<b>4b</b>	If "Yes," enter the name of the foreign country ► See the instructions for exceptions and filing requirements for Form TD F 90-22 1, Report of Foreign Bank and Financial Accounts		
<b>5a</b>	Was the organization a party to a prohibited tax shelter transaction at any time during the tax year?		<b>X</b>
<b>5b</b>	Did any taxable party notify the organization that it was or is a party to a prohibited tax shelter transaction?		<b>X</b>
<b>5c</b>	If "Yes," to line 5a or 5b, did the organization file Form 8886-T, Disclosure by Tax-Exempt Entity Regarding Prohibited Tax Shelter Transaction?		
<b>6a</b>	Does the organization have annual gross receipts that are normally greater than \$100,000, and did the organization solicit any contributions that were not tax deductible?		<b>X</b>
<b>6b</b>	If "Yes," did the organization include with every solicitation an express statement that such contributions or gifts were not tax deductible?		
<b>7</b>	<b>Organizations that may receive deductible contributions under section 170(c).</b>		
<b>7a</b>	Did the organization receive a payment in excess of \$75 made partly as a contribution and partly for goods and services provided to the payor?		<b>X</b>
<b>7b</b>	If "Yes," did the organization notify the donor of the value of the goods or services provided?		
<b>7c</b>	Did the organization sell, exchange, or otherwise dispose of tangible personal property for which it was required to file Form 8282?		<b>X</b>
<b>7d</b>	If "Yes," indicate the number of Forms 8282 filed during the year		
<b>7e</b>	Did the organization, during the year, receive any funds, directly or indirectly, to pay premiums on a personal benefit contract?		<b>X</b>
<b>7f</b>	Did the organization, during the year, pay premiums, directly or indirectly, on a personal benefit contract?		<b>X</b>
<b>7g</b>	For all contributions of qualified intellectual property, did the organization file Form 8899 as required?		
<b>7h</b>	For contributions of cars, boats, airplanes, and other vehicles, did the organization file a Form 1098-C as required?		
<b>8</b>	<b>Sponsoring organizations maintaining donor advised funds and section 509(a)(3) supporting organizations.</b> Did the supporting organization, or a donor advised fund maintained by a sponsoring organization, have excess business holdings at any time during the year?		
<b>9</b>	<b>Sponsoring organizations maintaining donor advised funds.</b>		
<b>9a</b>	Did the organization make any taxable distributions under section 4966?		
<b>9b</b>	Did the organization make a distribution to a donor, donor advisor, or related person?		
<b>10</b>	<b>Section 501(c)(7) organizations.</b> Enter		
<b>10a</b>	Initiation fees and capital contributions included on Part VIII, line 12		
<b>10b</b>	Gross receipts, included on Form 990, Part VIII, line 12, for public use of club facilities		
<b>11</b>	<b>Section 501(c)(12) organizations.</b> Enter		
<b>11a</b>	Gross income from members or shareholders		
<b>11b</b>	Gross income from other sources (Do not net amounts due or paid to other sources against amounts due or received from them )		
<b>12a</b>	<b>Section 4947(a)(1) non-exempt charitable trusts.</b> Is the organization filing Form 990 in lieu of Form 1041?		
<b>12b</b>	If "Yes," enter the amount of tax-exempt interest received or accrued during the year		







**Part VIII Statement of Revenue**

			(A) Total revenue	(B) Related or exempt function revenue	(C) Unrelated business revenue	(D) Revenue excluded from tax under sections 512, 513, or 514
<b>Contributions, gifts, grants and other similar amounts</b>	<b>1a</b> Federated campaigns	<b>1a</b>				
	<b>b</b> Membership dues	<b>1b</b>				
	<b>c</b> Fundraising events	<b>1c</b>				
	<b>d</b> Related organizations	<b>1d</b>				
	<b>e</b> Government grants (contributions)	<b>1e</b>				
	<b>f</b> All other contributions, gifts, grants, and similar amounts not included above	<b>1f</b>	<b>329,445</b>			
	<b>g</b> Noncash contributions included in lines 1a-1f	\$				
	<b>h Total.</b> Add lines 1a-1f	▶		<b>329,445</b>		
	<b>Program Service Revenue</b>		<b>Busn. Code</b>			
<b>2a</b> RENT			<b>235,927</b>	<b>235,927</b>		
<b>b</b> CAFE 58			<b>203,550</b>	<b>203,550</b>		
<b>c</b>						
<b>d</b>						
<b>e</b>						
<b>f</b> All other program service revenue						
<b>g Total.</b> Add lines 2a-2f		▶		<b>439,477</b>		
<b>Other Revenue</b>	<b>3</b> Investment income (including dividends, interest, and other similar amounts)	▶	<b>134</b>	<b>134</b>		
	<b>4</b> Income from investment of tax-exempt bond proceeds	▶				
	<b>5</b> Royalties	▶				
		(i) Real	(ii) Personal			
	<b>6a</b> Gross Rents					
	<b>b</b> Less rental exps					
	<b>c</b> Rental inc or (loss)					
	<b>d</b> Net rental income or (loss)	▶				
	<b>7a</b> Gross amount from sales of assets other than inventory	(i) Securities	(ii) Other			
	<b>b</b> Less cost or other basis & sales exps					
	<b>c</b> Gain or (loss)					
	<b>d</b> Net gain or (loss)	▶				
	<b>8a</b> Gross income from fundraising events (not including \$ of contributions reported on line 1c) See Part IV, line 18	<b>a</b>				
	<b>b</b> Less direct expenses	<b>b</b>				
	<b>c</b> Net income or (loss) from fundraising events	▶				
<b>9a</b> Gross income from gaming activities See Part IV, line 19	<b>a</b>					
<b>b</b> Less direct expenses	<b>b</b>					
<b>c</b> Net income or (loss) from gaming activities	▶					
<b>10a</b> Gross sales of inventory, less returns and allowances	<b>a</b>					
<b>b</b> Less cost of goods sold	<b>b</b>					
<b>c</b> Net income or (loss) from sales of inventory	▶					
Miscellaneous Revenue		<b>Busn. Code</b>				
<b>11a</b> MISCELLANEOUS			<b>1,713</b>	<b>1,713</b>		
<b>b</b>						
<b>c</b>						
<b>d</b> All other revenue						
<b>e Total.</b> Add lines 11a-11d	▶		<b>1,713</b>			
<b>12 Total Revenue.</b> See instructions	▶		<b>770,769</b>	<b>441,324</b>	<b>0</b>	<b>0</b>

**Part IX Statement of Functional Expenses**

**Section 501(c)(3) and 501(c)(4) organizations must complete all columns.  
All other organizations must complete column (A) but are not required to complete columns (B), (C), and (D).**

Do not include amounts reported on lines 6b, 7b, 8b, 9b, and 10b of Part VIII.	(A) Total expenses	(B) Program service expenses	(C) Management and general expenses	(D) Fundraising expenses
1 Grants and other assistance to governments and organizations in the U S See Part IV, line 21				
2 Grants and other assistance to individuals in the U S See Part IV, line 22				
3 Grants and other assistance to governments, organizations, and individuals outside the U S See Part IV, lines 15 and 16				
4 Benefits paid to or for members				
5 Compensation of current officers, directors, trustees, and key employees				
6 Compensation not included above, to disqualified persons (as defined under section 4958(f)(1)) and persons described in section 4958(c)(3)(B)				
7 Other salaries and wages	224,593	224,593		
8 Pension plan contributions (include section 401(k) and section 403(b) employer contributions)				
9 Other employee benefits				
10 Payroll taxes	17,412	17,412		
11 Fees for services (non-employees)				
a Management				
b Legal				
c Accounting	7,300	7,300		
d Lobbying				
e Professional fundraising services See Part IV, line 17				
f Investment management fees				
g Other	7,150	7,150		
12 Advertising and promotion	318	318		
13 Office expenses	44,132	44,132		
14 Information technology				
15 Royalties				
16 Occupancy	219,454	219,454		
17 Travel	2,683	2,683		
18 Payments of travel or entertainment expenses for any federal, state, or local public officials				
19 Conferences, conventions, and meetings				
20 Interest	47,048	47,048		
21 Payments to affiliates				
22 Depreciation, depletion, and amortization	31,869	31,869		
23 Insurance	4,276	4,276		
24 Other expenses Itemize expenses not covered above (Expenses grouped together and labeled miscellaneous may not exceed 5% of total expenses shown on line 25 below)				
a FOOD	122,075	122,075		
b SALES TAX	7,584	7,584		
c LINENS	2,691	2,691		
d BENEVOLENCE	2,238	2,238		
e DUES & SUBSCRIPTIONS	2,091	2,091		
f All other expenses	2,302	2,302		
25 Total functional expenses. Add lines 1 through 24f	745,216	745,216		
26 Joint costs. Check here <input type="checkbox"/> if following SOP 98-2 Complete this line only if the organization reported in column (B) joint costs from a combined educational campaign and fundraising solicitation				

**Part X Balance Sheet**

		(A) Beginning of year		(B) End of year		
<b>Assets</b>	1	Cash—non-interest bearing	55,749	1	78,157	
	2	Savings and temporary cash investments		2		
	3	Pledges and grants receivable, net		3		
	4	Accounts receivable, net		4	1,228	
	5	Receivables from current and former officers, directors, trustees, key employees, and highest compensated employees Complete Part II of Schedule L		5		
	6	Receivables from other disqualified persons (as defined under section 4958(f)(1)) and persons described in section 4958(c)(3)(B) Complete Part II of Schedule L		6		
	7	Notes and loans receivable, net		7		
	8	Inventories for sale or use		8		
	9	Prepaid expenses and deferred charges		9		
	10a	Land, buildings, and equipment cost or other basis Complete Part VI of Schedule D	1,169,534			
	b	Less accumulated depreciation	112,841	1,083,283	10c	1,056,693
	11	Investments—publicly traded securities		11		
	12	Investments—other securities See Part IV, line 11		12		
	13	Investments—program-related See Part IV, line 11		13		
	14	Intangible assets	1,790	14	883	
	15	Other assets See Part IV, line 11		15		
16	<b>Total assets.</b> Add lines 1 through 15 (must equal line 34)	1,140,822	16	1,136,961		
<b>Liabilities</b>	17	Accounts payable and accrued expenses	23,720	17	31,447	
	18	Grants payable		18		
	19	Deferred revenue	7,705	19	696	
	20	Tax-exempt bond liabilities		20		
	21	Escrow or custodial account liability Complete Part IV of Schedule D		21		
	22	Payables to current and former officers, directors, trustees, key employees, highest compensated employees, and disqualified persons Complete Part II of Schedule L		22		
	23	Secured mortgages and notes payable to unrelated third parties	649,973	23	619,841	
	24	Unsecured notes and loans payable to unrelated third parties		24		
	25	Other liabilities Complete Part X of Schedule D		25		
	26	<b>Total liabilities.</b> Add lines 17 through 25	681,398	26	651,984	
<b>Net Assets or Fund Balances</b>	Organizations that follow SFAS 117, check here <input checked="" type="checkbox"/> and complete lines 27 through 29, and lines 33 and 34.					
	27	Unrestricted net assets	459,424	27	484,977	
	28	Temporarily restricted net assets		28		
	29	Permanently restricted net assets		29		
	Organizations that do not follow SFAS 117, check here <input type="checkbox"/> and complete lines 30 through 34.					
	30	Capital stock or trust principal, or current funds		30		
	31	Paid-in or capital surplus, or land, building, or equipment fund		31		
	32	Retained earnings, endowment, accumulated income, or other funds		32		
	33	<b>Total net assets or fund balances</b>	459,424	33	484,977	
34	<b>Total liabilities and net assets/fund balances</b>	1,140,822	34	1,136,961		

**Part XI Financial Statements and Reporting**

**1** Accounting method used to prepare the Form 990  Cash  Accrual  Other \_\_\_\_\_

If the organization changed its method of accounting from a prior year or checked "Other," explain in Schedule O

**2a** Were the organization's financial statements compiled or reviewed by an independent accountant?

**b** Were the organization's financial statements audited by an independent accountant?

**c** If "Yes" to line 2a or 2b, does the organization have a committee that assumes responsibility for oversight of the audit, review, or compilation of its financial statements and selection of an independent accountant?

If the organization changed either its oversight process or selection process during the tax year, explain in Schedule O

**d** If "Yes" to line 2a or 2b, check a box below to indicate whether the financial statements for the year were issued on a consolidated basis, separate basis, or both

Separate basis  Consolidated basis  Both consolidated and separate basis

**3a** As a result of a federal award, was the organization required to undergo an audit or audits as set forth in the Single Audit Act and OMB Circular A-133?

**b** If "Yes," did the organization undergo the required audit or audits? If the organization did not undergo the required audit or audits, explain why in Schedule O and describe any steps taken to undergo such audits

	Yes	No
<b>2a</b>		<b>X</b>
<b>2b</b>	<b>X</b>	
<b>2c</b>	<b>X</b>	
<b>3a</b>		
<b>3b</b>		

**SCHEDULE A**  
**(Form 990 or 990-EZ)**

**Public Charity Status and Public Support**

OMB No 1545-0047

**2009**

**Open to Public Inspection**

Department of the Treasury  
Internal Revenue Service

Complete if the organization is a section 501(c)(3) organization or a section 4947(a)(1) nonexempt charitable trust.

▶ Attach to Form 990 or Form 990-EZ. ▶ See separate instructions.

Name of the organization

**CITY ON A HILL MINISTRIES**

Employer identification number

**20-3901260**

**Part I Reason for Public Charity Status (All organizations must complete this part.) See instructions.**

The organization is not a private foundation because it is (For lines 1 through 11, check only one box )

- 1  A church, convention of churches, or association of churches described in **section 170(b)(1)(A)(i)**.
- 2  A school described in **section 170(b)(1)(A)(ii)**. (Attach Schedule E )
- 3  A hospital or a cooperative hospital service organization described in **section 170(b)(1)(A)(iii)**.
- 4  A medical research organization operated in conjunction with a hospital described in **section 170(b)(1)(A)(iii)**. Enter the hospital's name, city, and state
- 5  An organization operated for the benefit of a college or university owned or operated by a governmental unit described in **section 170(b)(1)(A)(iv)**. (Complete Part II )
- 6  A federal, state, or local government or governmental unit described in **section 170(b)(1)(A)(v)**.
- 7  An organization that normally receives a substantial part of its support from a governmental unit or from the general public described in **section 170(b)(1)(A)(vi)**. (Complete Part II )
- 8  A community trust described in **section 170(b)(1)(A)(vi)**. (Complete Part II )
- 9  An organization that normally receives (1) more than 33 1/3 % of its support from contributions, membership fees, and gross receipts from activities related to its exempt functions—subject to certain exceptions, and (2) no more than 33 1/3 % of its support from gross investment income and unrelated business taxable income (less section 511 tax) from businesses acquired by the organization after June 30, 1975 See **section 509(a)(2)**. (Complete Part III )
- 10  An organization organized and operated exclusively to test for public safety See **section 509(a)(4)**.
- 11  An organization organized and operated exclusively for the benefit of, to perform the functions of, or to carry out the purposes of one or more publicly supported organizations described in section 509(a)(1) or section 509(a)(2) See **section 509(a)(3)** Check the box that describes the type of supporting organization and complete lines 11e through 11h
  - a  Type I      b  Type II      c  Type III—Functionally integrated      d  Type III—Other
- e  By checking this box, I certify that the organization is not controlled directly or indirectly by one or more disqualified persons other than foundation managers and other than one or more publicly supported organizations described in section 509(a)(1) or section 509(a)(2)
- f If the organization received a written determination from the IRS that it is a Type I, Type II, or Type III supporting organization, check this box
- g Since August 17, 2006, has the organization accepted any gift or contribution from any of the following persons?
  - (i) A person who directly or indirectly controls, either alone or together with persons described in (ii) and (iii) below, the governing body of the supported organization?
  - (ii) A family member of a person described in (i) above?
  - (iii) A 35% controlled entity of a person described in (i) or (ii) above?

	Yes	No
11g(i)		
11g(ii)		
11g(iii)		

(i) Name of supported organization	(ii) EIN	(iii) Type of organization (described on lines 1–9 above or IRC section (see instructions))	(iv) Is the organization in col (i) listed in your governing document?		(v) Did you notify the organization in col (i) of your support?		(vi) Is the organization in col (i) organized in the U S ?		(vii) Amount of support
			Yes	No	Yes	No	Yes	No	
<b>Total</b>									

For Privacy Act and Paperwork Reduction Act Notice, see the Instructions for Form 990 or 990-EZ.

Schedule A (Form 990 or 990-EZ) 2009

**Part II Support Schedule for Organizations Described in Sections 170(b)(1)(A)(iv) and 170(b)(1)(A)(vi)**

(Complete only if you checked the box on line 5, 7, or 8 of Part I.)

**Section A. Public Support**

Calendar year (or fiscal year beginning in) ▶	(a) 2005	(b) 2006	(c) 2007	(d) 2008	(e) 2009	(f) Total
<b>1</b> Gifts, grants, contributions, and membership fees received (Do not include any "unusual grants.")						
<b>2</b> Tax revenues levied for the organization's benefit and either paid to or expended on its behalf						
<b>3</b> The value of services or facilities furnished by a governmental unit to the organization without charge						
<b>4 Total.</b> Add lines 1 through 3						
<b>5</b> The portion of total contributions by each person (other than a governmental unit or publicly supported organization) included on line 1 that exceeds 2% of the amount shown on line 11, column (f)						
<b>6 Public support.</b> Subtract line 5 from line 4						

**Section B. Total Support**

Calendar year (or fiscal year beginning in) ▶	(a) 2005	(b) 2006	(c) 2007	(d) 2008	(e) 2009	(f) Total
<b>7</b> Amounts from line 4						
<b>8</b> Gross income from interest, dividends, payments received on securities loans, rents, royalties and income from similar sources						
<b>9</b> Net income from unrelated business activities, whether or not the business is regularly carried on						
<b>10</b> Other income Do not include gain or loss from the sale of capital assets (Explain in Part IV)						
<b>11 Total support.</b> Add lines 7 through 10						
<b>12</b> Gross receipts from related activities, etc. (see instructions)					12	
<b>13 First five years.</b> If the Form 990 is for the organization's first, second, third, fourth, or fifth tax year as a section 501(c)(3) organization, check this box and <b>stop here</b> ▶ <input type="checkbox"/>						

**Section C. Computation of Public Support Percentage**

<b>14</b> Public support percentage for 2009 (line 6, column (f) divided by line 11, column (f))	<b>14</b>	%
<b>15</b> Public support percentage from 2008 Schedule A, Part II, line 14	<b>15</b>	%
<b>16a 33 1/3 % support test—2009.</b> If the organization did not check the box on line 13, and line 14 is 33 1/3 % or more, check this box and <b>stop here.</b> The organization qualifies as a publicly supported organization ▶ <input type="checkbox"/>		
<b>b 33 1/3 % support test—2008.</b> If the organization did not check a box on line 13 or 16a, and line 15 is 33 1/3 % or more, check this box and <b>stop here.</b> The organization qualifies as a publicly supported organization ▶ <input type="checkbox"/>		
<b>17a 10%-facts-and-circumstances test—2009.</b> If the organization did not check a box on line 13, 16a, or 16b, and line 14 is 10% or more, and if the organization meets the "facts-and-circumstances" test, check this box and <b>stop here.</b> Explain in Part IV how the organization meets the "facts-and-circumstances" test The organization qualifies as a publicly supported organization ▶ <input type="checkbox"/>		
<b>b 10%-facts-and-circumstances test—2008.</b> If the organization did not check a box on line 13, 16a, 16b, or 17a, and line 15 is 10% or more, and if the organization meets the "facts-and-circumstances" test, check this box and <b>stop here.</b> Explain in Part IV how the organization meets the "facts-and-circumstances" test The organization qualifies as a publicly supported organization ▶ <input type="checkbox"/>		
<b>18 Private foundation.</b> If the organization did not check a box on line 13, 16a, 16b, 17a, or 17b, check this box and see instructions ▶ <input type="checkbox"/>		

**Part III Support Schedule for Organizations Described in Section 509(a)(2)**

(Complete only if you checked the box on line 9 of Part I.)

**Section A. Public Support**

Calendar year (or fiscal year beginning in) ▶	(a) 2005	(b) 2006	(c) 2007	(d) 2008	(e) 2009	(f) Total
<b>1</b> Gifts, grants, contributions, and membership fees received (Do not include any "unusual grants.")	323,738	464,325	471,672	348,324	329,445	1,937,504
<b>2</b> Gross receipts from admissions, merchandise sold or services performed, or facilities rented in any activity that is related to the organization's tax-exempt purpose	1,297	205,076	308,048	388,459	439,477	1,342,357
<b>3</b> Gross receipts from activities that are not an unrelated trade or business under section 513						
<b>4</b> Tax revenues levied for the organization's benefit and either paid to or expended on its behalf						
<b>5</b> The value of services or facilities furnished by a governmental unit to the organization without charge						
<b>6 Total.</b> Add lines 1 through 5	325,035	669,401	779,720	736,783	768,922	3,279,861
<b>7a</b> Amounts included on lines 1, 2, and 3 received from disqualified persons						
<b>b</b> Amounts included on lines 2 and 3 received from other than disqualified persons that exceed the greater of \$5,000 or 1% of the amount on line 13 for the year						
<b>c</b> Add lines 7a and 7b						
<b>8 Public support</b> (Subtract line 7c from line 6)						3,279,861

**Section B. Total Support**

Calendar year (or fiscal year beginning in) ▶	(a) 2005	(b) 2006	(c) 2007	(d) 2008	(e) 2009	(f) Total
<b>9</b> Amounts from line 6	325,035	669,401	779,720	736,783	768,922	3,279,861
<b>10a</b> Gross income from interest, dividends, payments received on securities loans, rents, royalties and income from similar sources	406	674	479	161	134	1,854
<b>b</b> Unrelated business taxable income (less section 511 taxes) from businesses acquired after June 30, 1975						
<b>c</b> Add lines 10a and 10b	406	674	479	161	134	1,854
<b>11</b> Net income from unrelated business activities not included in line 10b, whether or not the business is regularly carried on					0	
<b>12</b> Other income. Do not include gain or loss from the sale of capital assets (Explain in Part IV.)			329	821	1,713	2,863
<b>13 Total support.</b> (Add lines 9, 10c, 11, and 12)	325,441	670,075	780,528	737,765	770,769	3,284,578

**14 First five years.** If the Form 990 is for the organization's first, second, third, fourth, or fifth tax year as a section 501(c)(3) organization, check this box and **stop here**

**Section C. Computation of Public Support Percentage**

<b>15</b> Public support percentage for 2009 (line 8, column (f) divided by line 13, column (f))	<b>15</b>	99.86%
<b>16</b> Public support percentage from 2008 Schedule A, Part III, line 15	<b>16</b>	99.89%

**Section D. Computation of Investment Income Percentage**

<b>17</b> Investment income percentage for 2009 (line 10c, column (f) divided by line 13, column (f))	<b>17</b>	%
<b>18</b> Investment income percentage from 2008 Schedule A, Part III, line 17	<b>18</b>	%

**19a 33 1/3 % support tests—2009.** If the organization did not check the box on line 14, and line 15 is more than 33 1/3 %, and line 17 is not more than 33 1/3 %, check this box and **stop here**. The organization qualifies as a publicly supported organization

**b 33 1/3 % support tests—2008.** If the organization did not check a box on line 14 or line 19a, and line 16 is more than 33 1/3 %, and line 18 is not more than 33 1/3 %, check this box and **stop here**. The organization qualifies as a publicly supported organization

**20 Private foundation.** If the organization did not check a box on line 14, 19a, or 19b, check this box and see instructions

**Part IV** **Supplemental Information.** Complete this part to provide the explanations required by Part II, line 10; Part II, line 17a or 17b; and Part III, line 12. Provide any other additional information. See instructions.

**Part III, Line 12 - Other Income Detail**

**MISCELLANEOUS INCOME** \$ 2,863

# Supplemental Financial Statements

OMB No 1545-0047

▶ Complete if the organization answered "Yes," to Form 990, Part IV, line 6, 7, 8, 9, 10, 11, or 12.

## 2009

▶ Attach to Form 990. ▶ See separate instructions.

Open to Public Inspection.

### SCHEDULE D (Form 990)

Department of the Treasury Internal Revenue Service

Name of the organization

Employer Identification number

**CITY ON A HILL MINISTRIES**

**20-3901260**

#### Part I Organizations Maintaining Donor Advised Funds or Other Similar Funds or Accounts. Complete if the organization answered "Yes" to Form 990, Part IV, line 6.

	(a) Donor advised funds	(b) Funds and other accounts
1 Total number at end of year		
2 Aggregate contributions to (during year)		
3 Aggregate grants from (during year)		
4 Aggregate value at end of year		
5 Did the organization inform all donors and donor advisors in writing that the assets held in donor advised funds are the organization's property, subject to the organization's exclusive legal control?		<input type="checkbox"/> Yes <input type="checkbox"/> No
6 Did the organization inform all grantees, donors, and donor advisors in writing that grant funds can be used only for charitable purposes and not for the benefit of the donor or donor advisor, or for any other purpose conferring impermissible private benefit?		<input type="checkbox"/> Yes <input type="checkbox"/> No

#### Part II Conservation Easements. Complete if the organization answered "Yes" to Form 990, Part IV, line 7

	Held at the End of the Tax Year
1 Purpose(s) of conservation easements held by the organization (check all that apply) <input type="checkbox"/> Preservation of land for public use (e.g., recreation or pleasure) <input type="checkbox"/> Preservation of an historically important land area <input type="checkbox"/> Protection of natural habitat <input type="checkbox"/> Preservation of certified historic structure <input type="checkbox"/> Preservation of open space	
2 Complete lines 2a through 2d if the organization held a qualified conservation contribution in the form of a conservation easement on the last day of the tax year	
a Total number of conservation easements	2a
b Total acreage restricted by conservation easements	2b
c Number of conservation easements on a certified historic structure included in (a)	2c
d Number of conservation easements included in (c) acquired after 8/17/06	2d
3 Number of conservation easements modified, transferred, released, extinguished, or terminated by the organization during the taxable year ▶	
4 Number of states where property subject to conservation easement is located ▶	
5 Does the organization have a written policy regarding the periodic monitoring, inspection, handling of violations, and enforcement of the conservation easements it holds?	<input type="checkbox"/> Yes <input type="checkbox"/> No
6 Staff and volunteer hours devoted to monitoring, inspecting, and enforcing conservation easements during the year ▶	
7 Amount of expenses incurred in monitoring, inspecting, and enforcing conservation easements during the year ▶ \$	
8 Does each conservation easement reported on line 2(d) above satisfy the requirements of section 170(h)(4)(B)(i) and section 170(h)(4)(B)(ii)?	<input type="checkbox"/> Yes <input type="checkbox"/> No
9 In Part XIV, describe how the organization reports conservation easements in its revenue and expense statement, and balance sheet, and include, if applicable, the text of the footnote to the organization's financial statements that describes the organization's accounting for conservation easements	

#### Part III Organizations Maintaining Collections of Art, Historical Treasures, or Other Similar Assets. Complete if the organization answered "Yes" to Form 990, Part IV, line 8

1a If the organization elected, as permitted under SFAS 116, not to report in its revenue statement and balance sheet works of art, historical treasures, or other similar assets held for public exhibition, education, or research in furtherance of public service, provide, in Part XIV, the text of the footnote to its financial statements that describes these items	
b If the organization elected, as permitted under SFAS 116, to report in its revenue statement and balance sheet works of art, historical treasures, or other similar assets held for public exhibition, education, or research in furtherance of public service, provide the following amounts relating to these items	
(i) Revenues included in Form 990, Part VIII, line 1	▶ \$ _____
(ii) Assets included in Form 990, Part X	▶ \$ _____
2 If the organization received or held works of art, historical treasures, or other similar assets for financial gain, provide the following amounts required to be reported under SFAS 116 relating to these items	
a Revenues included in Form 990, Part VIII, line 1	▶ \$ _____
b Assets included in Form 990, Part X	▶ \$ _____

**Part III Organizations Maintaining Collections of Art, Historical Treasures, or Other Similar Assets (continued)**

3 Using the organization's acquisition, accession, and other records, check any of the following that are a significant use of its collection items (check all that apply)

- a  Public exhibition
- b  Scholarly research
- c  Preservation for future generations
- d  Loan or exchange programs
- e  Other \_\_\_\_\_

4 Provide a description of the organization's collections and explain how they further the organization's exempt purpose in Part XIV

5 During the year, did the organization solicit or receive donations of art, historical treasures, or other similar assets to be sold to raise funds rather than to be maintained as part of the organization's collection?  Yes  No

**Part IV Escrow and Custodial Arrangements. Complete if the organization answered "Yes" to Form 990, Part IV, line 9, or reported an amount on Form 990, Part X, line 21.**

1a Is the organization an agent, trustee, custodian or other intermediary for contributions or other assets not included on Form 990, Part X?  Yes  No

b If "Yes," explain the arrangement in Part XIV and complete the following table

- c Beginning balance
- d Additions during the year
- e Distributions during the year
- f Ending balance

	Amount
1c	
1d	
1e	
1f	

2a Did the organization include an amount on Form 990, Part X, line 21?  Yes  No

b If "Yes," explain the arrangement in Part XIV

**Part V Endowment Funds. Complete if organization answered "Yes" to Form 990, Part IV, line 10.**

	(a) Current year	(b) Prior year	(c) Two years back	(d) Three years back	(e) Four years back
1a Beginning of year balance					
b Contributions					
c Net investment earnings, gains, and losses					
d Grants or scholarships					
e Other expenditures for facilities and programs					
f Administrative expenses					
g End of year balance					

2 Provide the estimated percentage of the year end balance held as

- a Board designated or quasi-endowment ▶ \_\_\_\_\_ %
- b Permanent endowment ▶ \_\_\_\_\_ %
- c Term endowment ▶ \_\_\_\_\_ %

3a Are there endowment funds not in the possession of the organization that are held and administered for the organization by

- (i) unrelated organizations
- (ii) related organizations

	Yes	No
3a(i)		
3a(ii)		
3b		

b If "Yes" to 3a(ii), are the related organizations listed as required on Schedule R?

4 Describe in Part XIV the intended uses of the organization's endowment funds

**Part VI Investments—Land, Buildings, and Equipment. See Form 990, Part X, line 10**

Description of investment	(a) Cost or other basis (investment)	(b) Cost or other basis (other)	(c) Accumulated depreciation	(d) Book value
1a Land		220,000		220,000
b Buildings		917,819	97,705	820,114
c Leasehold improvements				
d Equipment		31,715	15,136	16,579
e Other				
<b>Total. Add lines 1a through 1e (Column (d) must equal Form 990, Part X, column (B), line 10(c))</b>				<b>1,056,693</b>



Part XI Reconciliation of Change in Net Assets from Form 990 to Audited Financial Statements

Table with 10 rows for reconciliation of net assets. Line 1: Total revenue (770,769); Line 2: Total expenses (745,216); Line 3: Excess or (deficit) for the year (25,553); Line 10: Excess or (deficit) for the year per audited financial statements (25,553).

Part XII Reconciliation of Revenue per Audited Financial Statements With Revenue per Return

Table with 5 main rows for revenue reconciliation. Line 1: Total revenue (770,769); Line 3: Subtract line 2e from line 1 (770,769); Line 5: Total revenue (770,769). Includes sub-rows 2a-2d and 4a-4b.

Part XIII Reconciliation of Expenses per Audited Financial Statements With Expenses per Return

Table with 5 main rows for expense reconciliation. Line 1: Total expenses (745,216); Line 3: Subtract line 2e from line 1 (745,216); Line 5: Total expenses (745,216). Includes sub-rows 2a-2d and 4a-4b.

Part XIV Supplemental Information

Complete this part to provide the descriptions required for Part II, lines 3, 5, and 9, Part III, lines 1a and 4, Part IV, lines 1b and 2b, Part V, line 4, Part X, line 2, Part XI, line 8, Part XII, lines 2d and 4b, and Part XIII, lines 2d and 4b Also complete this part to provide any additional information

Series of horizontal dashed lines provided for entering supplemental information.



**SCHEDULE O**

(Form 990)

Department of the Treasury  
Internal Revenue Service

Name of the organization

**Supplemental Information to Form 990**Complete to provide information for responses to specific questions on  
Form 990 or to provide any additional information.

▶ Attach to Form 990.

OMB No 1545-0047

**2009**Open to Public  
Inspection**CITY ON A HILL MINISTRIES**

Employer identification number

**20-3901260****Form 990 - Organization's Mission or Most Significant Activities**

City on a Hill is an expanding community of compassionate people who reflect Christ through serving independent non-profit ministries, enhancing their ability to bring hope, help, and healing locally and around the world.

**Form 990, Part III, Line 4d - All Other Achievements**

Cafe 58 is a food service ministry of City on a Hill serving hot / cold beverages, snacks, and deli lunches and dinners to ministry staff, volunteers, and the general public. It is a great gathering place for anyone in need of a small meeting area as well as a place for friends of all ages to meet and have conversation.

**Form 990, Part VI, Line 11A - Organization's Process to Review Form 990**

The executive director and president of the board present the Form 990 to the full board for review and approval.

**Form 990, Part VI, Line 15a - Compensation Process for Top Official**

Board of directors sets the compensation for the executive director.

**Form 990, Part VI, Line 19 - Governing Documents Disclosure Explanation**

These documents are available upon request. Any requests for this information call for an appointment to meet with the executive director and are then given the documents.

Form **4562**

**Depreciation and Amortization**  
(Including Information on Listed Property)

OMB No 1545-0172

**2009**

Department of the Treasury  
Internal Revenue Service

(99)

▶ See separate instructions.

▶ Attach to your tax return.

Attachment Sequence No **67**

Name(s) shown on return

**CITY ON A HILL MINISTRIES**

Identifying number

**20-3901260**

Business or activity to which this form relates

**Indirect Depreciation**

**Part I Election To Expense Certain Property Under Section 179**

**Note:** If you have any listed property, complete Part V before you complete Part I.

1	Maximum amount See the instructions for a higher limit for certain businesses	1	250,000
2	Total cost of section 179 property placed in service (see instructions)	2	
3	Threshold cost of section 179 property before reduction in limitation (see instructions)	3	800,000
4	Reduction in limitation Subtract line 3 from line 2. If zero or less, enter -0-	4	
5	Dollar limitation for tax year Subtract line 4 from line 1. If zero or less, enter -0-. If married filing separately, see instructions	5	
6	(a) Description of property	(b) Cost (business use only)	(c) Elected cost
7	Listed property Enter the amount from line 29	7	
8	Total elected cost of section 179 property Add amounts in column (c), lines 6 and 7	8	
9	Tentative deduction Enter the smaller of line 5 or line 8	9	
10	Carryover of disallowed deduction from line 13 of your 2008 Form 4562	10	
11	Business income limitation Enter the smaller of business income (not less than zero) or line 5 (see instructions)	11	
12	Section 179 expense deduction Add lines 9 and 10, but do not enter more than line 11	12	
13	Carryover of disallowed deduction to 2010 Add lines 9 and 10, less line 12	▶ 13	

**Note:** Do not use Part II or Part III below for listed property. Instead, use Part V

**Part II Special Depreciation Allowance and Other Depreciation (Do not include listed property.) (See instr )**

14	Special depreciation allowance for qualified property (other than listed property) placed in service during the tax year (see instructions)	14	
15	Property subject to section 168(f)(1) election	15	
16	Other depreciation (including ACRS)	16	30,962

**Part III MACRS Depreciation (Do not include listed property.) (See instructions.)**

**Section A**

17	MACRS deductions for assets placed in service in tax years beginning before 2009	17	0
18	If you are electing to group any assets placed in service during the tax year into one or more general asset accounts, check here <input type="checkbox"/>		

**Section B--Assets Placed in Service During 2009 Tax Year Using the General Depreciation System**

(a) Classification of property	(b) Month and year placed in service	(c) Basis for depreciation (business/investment use only--see instructions)	(d) Recovery period	(e) Convention	(f) Method	(g) Depreciation deduction
19a 3-year property						
b 5-year property						
c 7-year property						
d 10-year property						
e 15-year property						
f 20-year property						
g 25-year property			25 yrs		S/L	
h Residential rental property			27 5 yrs	MM	S/L	
			27 5 yrs	MM	S/L	
i Nonresidential real property			39 yrs	MM	S/L	
				MM	S/L	

**Section C--Assets Placed in Service During 2009 Tax Year Using the Alternative Depreciation System**

20a Class life					S/L	
b 12-year			12 yrs		S/L	
c 40-year			40 yrs	MM	S/L	

**Part IV Summary (See instructions )**

21	Listed property Enter amount from line 28	21	
22	Total. Add amounts from line 12, lines 14 through 17, lines 19 and 20 in column (g), and line 21 Enter here and on the appropriate lines of your return Partnerships and S corporations--see instructions	22	30,962
23	For assets shown above and placed in service during the current year, enter the portion of the basis attributable to section 263A costs	23	

For Paperwork Reduction Act Notice, see separate instructions.

Form **4562** (2009)

**Part V Listed Property** (Include automobiles, certain other vehicles, cellular telephones, certain computers, and property used for entertainment, recreation, or amusement.)

Note: For any vehicle for which you are using the standard mileage rate or deducting lease expense, complete only 24a, 24b, columns (a) through (c) of Section A, all of Section B, and Section C if applicable

**Section A—Depreciation and Other Information** (Caution: See the instructions for limits for passenger automobiles )

24a Do you have evidence to support the business/investment use claimed?				Yes	No	24b If "Yes," is the evidence written?				Yes	No
(a) Type of property (list vehicles first)	(b) Date placed in service	(c) Business/investment use percentage	(d) Cost or other basis	(e) Basis for depreciation (business/investment use only)		(f) Recovery period	(g) Method/Convention	(h) Depreciation deduction	(i) Elected section 179 cost		
25 Special depreciation allowance for qualified listed property placed in service during the tax year and used more than 50% in a qualified business use (see instructions)									25		
26 Property used more than 50% in a qualified business use											
		%									
		%									
27 Property used 50% or less in a qualified business use											
		%					S/L-				
		%					S/L-				
28 Add amounts in column (h), lines 25 through 27 Enter here and on line 21, page 1									28		
29 Add amounts in column (i), line 26 Enter here and on line 7, page 1										29	

**Section B—Information on Use of Vehicles**

Complete this section for vehicles used by a sole proprietor, partner, or other "more than 5% owner," or related person. If you provided vehicles to your employees, first answer the questions in Section C to see if you meet an exception to completing this section for those vehicles

30 Total business/investment miles driven during the year (do not include commuting miles)	(a)	(b)	(c)	(d)	(e)	(f)
	Vehicle 1	Vehicle 2	Vehicle 3	Vehicle 4	Vehicle 5	Vehicle 6
31 Total commuting miles driven during the year						
32 Total other personal (noncommuting) miles driven						
33 Total miles driven during the year Add lines 30 through 32						
34 Was the vehicle available for personal use during off-duty hours?	Yes	No	Yes	No	Yes	No
35 Was the vehicle used primarily by a more than 5% owner or related person?	Yes	No	Yes	No	Yes	No
36 Is another vehicle available for personal use?	Yes	No	Yes	No	Yes	No

**Section C—Questions for Employers Who Provide Vehicles for Use by Their Employees**

Answer these questions to determine if you meet an exception to completing Section B for vehicles used by employees who are not more than 5% owners or related persons (see instructions)

37 Do you maintain a written policy statement that prohibits all personal use of vehicles, including commuting, by your employees?	Yes	No
38 Do you maintain a written policy statement that prohibits personal use of vehicles, except commuting, by your employees? See the instructions for vehicles used by corporate officers, directors, or 1% or more owners		
39 Do you treat all use of vehicles by employees as personal use?		
40 Do you provide more than five vehicles to your employees, obtain information from your employees about the use of the vehicles, and retain the information received?		
41 Do you meet the requirements concerning qualified automobile demonstration use? (See instructions )		

Note: If your answer to 37, 38, 39, 40, or 41 is "Yes," do not complete Section B for the covered vehicles

**Part VI Amortization**

(a) Description of costs	(b) Date amortization begins	(c) Amortizable amount	(d) Code section	(e) Amortization period or percentage	(f) Amortization for this year
42 Amortization of costs that begins during your 2009 tax year (see instructions)					
43 Amortization of costs that began before your 2009 tax year				43	907
44 Total. Add amounts in column (f) See the instructions for where to report				44	907

Forms <b>990 / 990-PF</b>	<b>Mortgages and Other Notes Payable</b>	<b>2009</b>
For calendar year 2009, or tax year beginning <b>07/01/09</b> , and ending <b>06/30/10</b>		

Name <b>CITY ON A HILL MINISTRIES</b>	Employer Identification Number <b>20-3901260</b>
--	---

**Form 990, Part X, Line 23 - Additional Information**

Name of lender	Relationship to disqualified person
(1) <b>MACATAWA BANK</b>	
(2)	
(3)	
(4)	
(5)	
(6)	
(7)	
(8)	
(9)	
(10)	

Original amount borrowed	Date of loan	Maturity date	Repayment terms	Interest rate
(1) <b>880,000</b>	<b>05/30/06</b>	<b>05/30/15</b>	<b>INTERST ONLY</b>	<b>6.950</b>
(2)				
(3)				
(4)				
(5)				
(6)				
(7)				
(8)				
(9)				
(10)				

Security provided by borrower	Purpose of loan
(1) <b>REAL ESTATE</b>	<b>PURCHASE REAL ESTATE</b>
(2)	
(3)	
(4)	
(5)	
(6)	
(7)	
(8)	
(9)	
(10)	

Consideration furnished by lender	Balance due at beginning of year	Balance due at end of year
(1)	<b>649,973</b>	<b>619,841</b>
(2)		
(3)		
(4)		
(5)		
(6)		
(7)		
(8)		
(9)		
(10)		
<b>Totals</b>	<b>649,973</b>	<b>619,841</b>

Year Ended: June 30, 2010

20-3901260

CITY ON A HILL MINISTRIES  
100 SOUTH PINE STREET  
ZEELAND, MI 49464

**Electing out of the 50% Bonus Depreciation Allowance for  
All Eligible Depreciable Property**

The taxpayer elects out of the 50% first-year bonus depreciation allowance under IRC Section 168(k) for all eligible asset classes of depreciable property acquired after December 31, 2007. This election applies to all eligible depreciable property placed in service during the tax year.